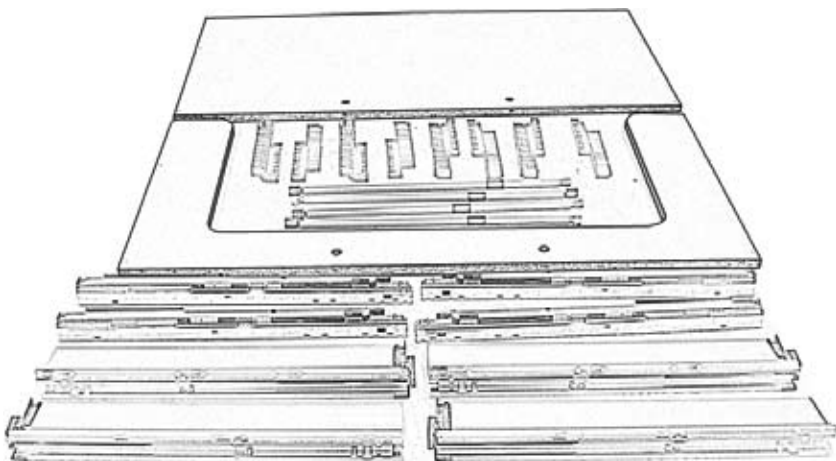
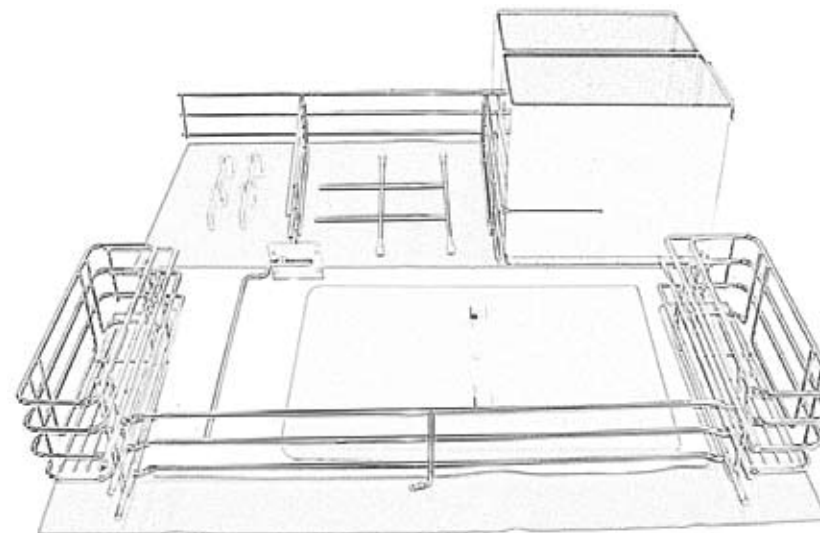


# SPACEWORKS 2-DRAWER SINK UNIT PACK 1000

## COMPONENTS SUPPLIED



- Bottom Drawer Bottom Panel x 1
- Drawer Fixing Clips x 4 pairs
- Top Drawer Top Panel x 1
- Drawer Runners x 2 pairs
- Drawer Sides x 2 pairs
- Tandem Box Gallery Rails x 2 pairs

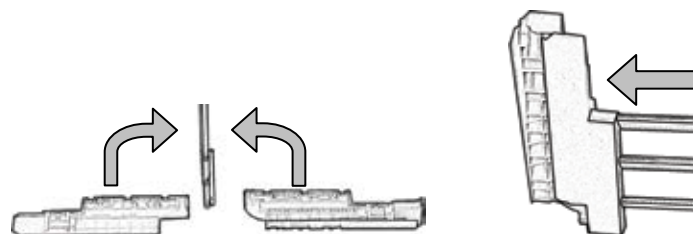


- Bottom Drawer Mat x 1
- Bottom Drawer Wirework x 1
- Plastic Spacers x 4
- Wirework Divider x 1
- Bin x 2
  
- Top Drawer Mat x 1
- Top Drawer Wirework x 1
- Bin Lid Metal Support x 1
- Bin Lid x 1

1. Assemble the bottom drawer by inserting two circular cams B into the holes in the bottom panel, ensuring the arrows point towards the pre-drilled edge. Attach the drawer side to the bottom panel, using two L screws. Repeat to fix the remaining side. Place bottom drawer mat in drawer.

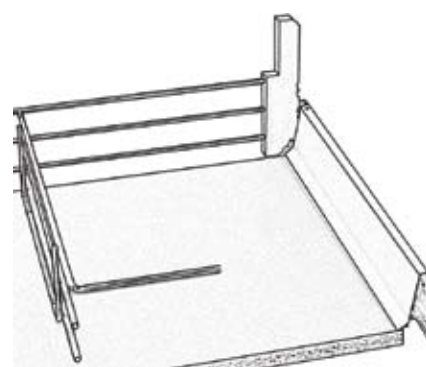


2. Take one pair of clips and attach to the wirework by holding one against the wire frame, and sliding the other into it - front to back. Repeat to attach the second pair to the wirework.

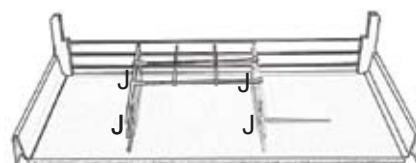


**Note:** The clips are handed.

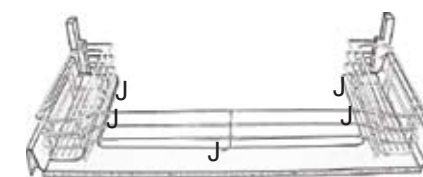
3. To fix the wirework into the drawer, secure each clip into each side, as shown.



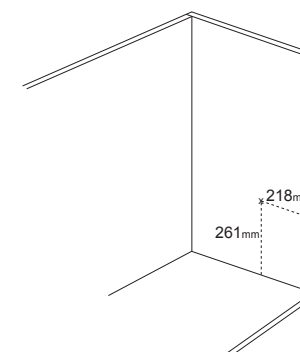
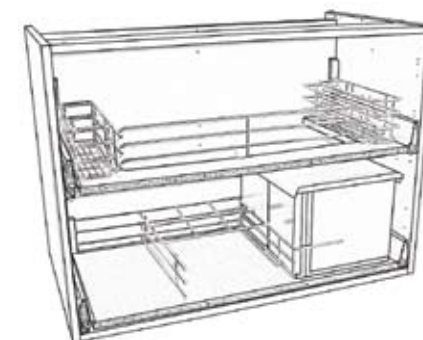
4. Fix the wirework divider in place where required. Secure the wirework, using 4 x J screws. Use these to keep the wirework square.



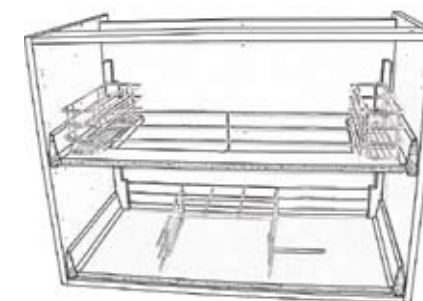
5. Repeat to assemble the top drawer. Once assembled secure using 5 x J screws and insert the wire baskets where required.



6. To secure the bin lid support to the end panel, four 5mm holes will need to be drilled into the end panel. The top-right hole should be drilled at 218mm (in) x 261mm (up - from the top of the bottom panel). Secure the bin lid support using 4 M screws.



7. Fit the drawer runners into the 1000mm base unit, in positions 2\* and 5, using M screws. Once fitted insert both drawers.



8. PLEASE NOTE: there is a Top and a Bottom drawer front. When attaching the drawer fronts, although this unit uses a 450mm depth drawer, please use the top holes on the drawer front to fix the gallery rails. Remember to lock the cams on the underside of the drawers when fitting the drawer fronts.

FITTINGS SUPPLIED						
A		Metal Dowel	4	K	Flange Head Screw 6 x 3/4"	12
B		Metal Cam	4	M	Eurocrew 6 x 11mm	12
G		Countersunk Screw 6 x 1 1/4"	4	N	Round Head Screw 6 x 5/8"	8
J		Countersunk Screw 6 x 1/2"	12	S	Door Buffer Pad	2 pairs